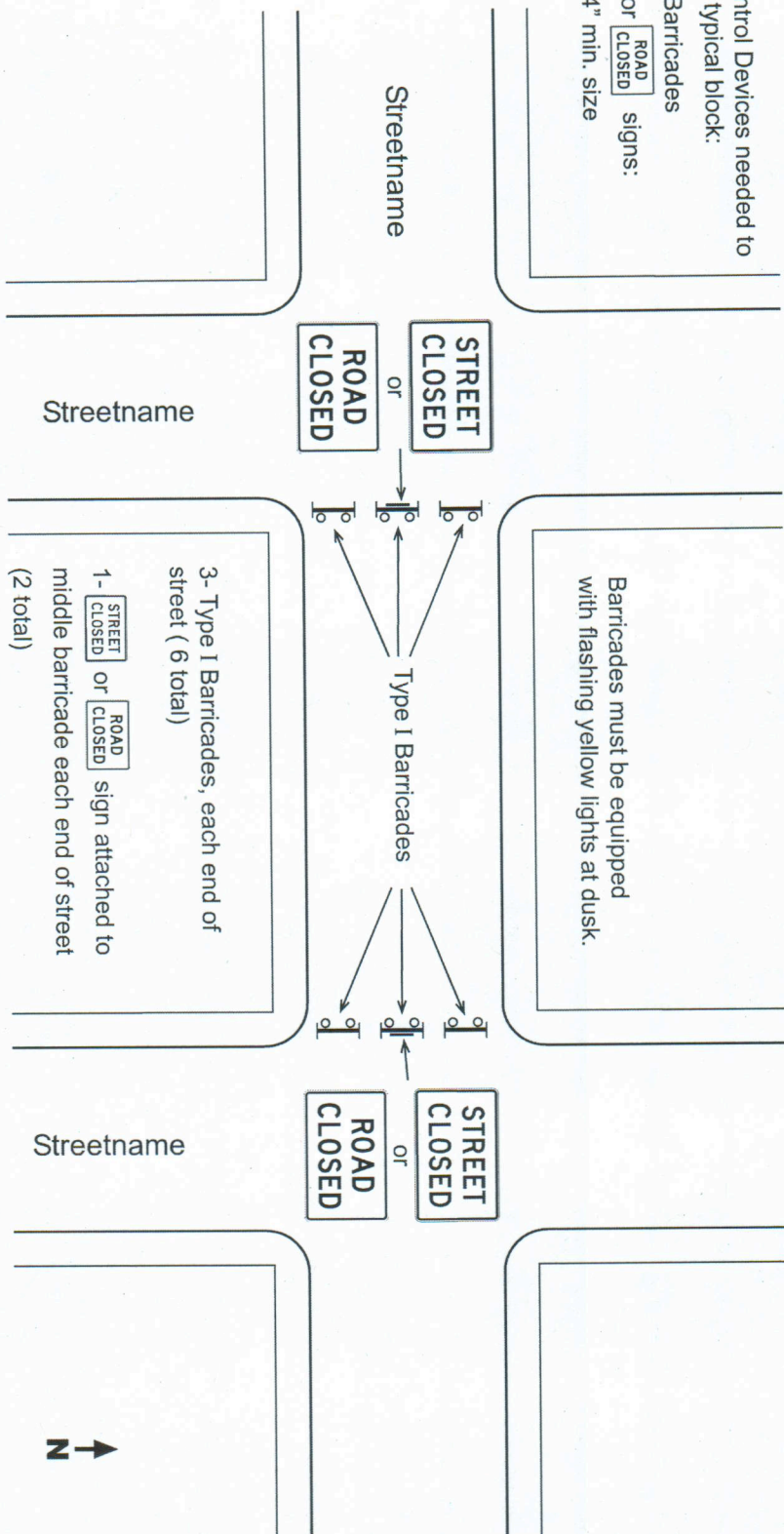


BLOCK PARTY STREET CLOSURE TRAFFIC CONTROL

(Typical)

Traffic Control Devices needed to close one typical block:

- 6- Type I Barricades
- 2- STREET CLOSED or ROAD CLOSED signs: 30" x 24" min. size



THIS EXAMPLE IS FOR A TYPICAL BLOCK CONFIGURATION.
 IF YOUR STREET DOES NOT MEET THIS CONFIGURATION, YOU MAY BE REQUIRED TO
 SUBMIT A TRAFFIC CONTROL PLAN WITH YOUR APPLICATION.

TRANSPORTATION SYSTEM MANAGEMENT

CITY OF PORTLAND, OREGON

TITLE OF STANDARD PLAN
STANDARD STREET CLOSURE TRAFFIC CONTROLS

STANDARD PLAN NO.

APPROVED

NO. REVISIONS

DATE BY

4a

Block Party

Robert M. Brumby
 CITY TRAFFIC ENGINEER DATE 6/11/08

CITY TRAFFIC ENGINEER

DATE